

Helping you to have your say:

We are now consulting local people on a new pattern of wards for Tewkesbury. The Commission has an open mind about its final recommendations and will consider every piece of evidence it receives from local groups and people. Every representation will be considered, regardless of whom it is from or whether it relates to the whole borough or just a part of it.

If you agree with our recommendations, please let us know. If you don't think our recommendations are right for Tewkesbury, we want to hear alternative proposals for a different pattern of wards.

The Commission aims to propose a pattern of wards for Tewkesbury which delivers:

- **Electoral equality:** each councillor represents a similar number of voters.
- **Community identity:** reflects the identity and interests of local communities.
- **Effective and convenient local government:** helping your council discharge its responsibilities effectively.

July 2017

The
Local Government
Boundary Commission
for England

Draft recommendations on the new electoral arrangements for Tewkesbury Borough Council

Summary report

Read the full report, view detailed maps and have your say at: consultation.lgbce.org.uk
Find out more at: www.lgbce.org.uk
Follow us on Twitter at: [@LGBCE](https://twitter.com/LGBCE)

A good pattern of wards should:

- Provide good electoral equality, with each councillor representing, as closely as possible, the same number of voters.
- Reflect community interests and identities and include evidence of community links.
- Be based on strong, easily identifiable boundaries.
- Help the council deliver effective and convenient local government.

Electoral equality:

- Does your proposal mean that councillors would represent roughly the same number of voters as elsewhere in the council area?

Community identity:

- **Transport links:** are there good links across your proposed ward? Is there any form of public transport?
- **Community groups:** is there a parish council, residents association or another group that represents the area?
- **Facilities:** does your pattern of wards reflect where local people go for shops, medical services, leisure facilities etc?
- **Interests:** what issues bind the community together or separate it from other parts of your area?
- **Identifiable boundaries:** are there natural or constructed features which make strong boundaries for your proposals?

Effective local government:

- Are any of the proposed wards too large or small to be represented effectively?
- Are the proposed names of the wards appropriate?

Useful tips:

- Our website has a special consultation area where you can explore the maps and draw your own proposed boundaries. You can find it at consultation.lgbce.org.uk.
- We publish all submissions we receive on our website so you can follow what other people and organisations have told us. Go to: www.lgbce.org.uk

Have your say by writing to:

Review Officer (Tewkesbury)
LGBCE
14th floor, Millbank Tower
London
SW1P 4QP

Through our consultation area:
consultation.lgbce.org.uk
or by email to: reviews@lgbce.org.uk

The full report and interactive maps are available to view at www.lgbce.org.uk

Follow us on Twitter: [@LGBCE](https://twitter.com/LGBCE)

Who we are

The Local Government Boundary Commission for England is an independent body set up by Parliament. We are not part of government or any political party. We are accountable to Parliament through a committee of MPs chaired by the Speaker of the House of Commons.

Our main role is to carry out electoral reviews of local authorities throughout England.

Electoral review

An electoral review examines and proposes new electoral arrangements for a local authority. A local authority's electoral arrangements are:

- The total number of councillors representing the council's voters ('council size').
- The names, number and boundaries of wards or electoral divisions.
- The number of councillors representing each ward or division.

Why Tewkesbury?

We are conducting an electoral review of Tewkesbury following a formal request from the council to deliver improved levels of electoral equality for local voters.

Tewkesbury has high levels of electoral inequality where some councillors represent many more - or many fewer - voters than others. This means that the value of your vote varies depending on where you live in Tewkesbury.

Our proposals

Tewkesbury Borough Council currently has 38 councillors. We propose that the council should continue to have 38 councillors in future.

Electoral arrangements

Our draft recommendations propose that Tewkesbury's 38 councillors should represent five one-councillor wards, twelve two-councillor wards and three-councillor wards across the borough.

You have until 4 September 2017 to have your say on the recommendations

Stage of review	Description
10 Jan - 20 Mar 2017	Public consultation on new ward boundaries
4 Jul - 4 Sep 2017	Public consultation on draft recommendations for new electoral arrangements
31 Oct 2017	Publication of final recommendations by the Commission
May 2019	Subject to parliamentary approval - implementation of new arrangements at local elections

Summary of our recommendations

We have considered all the representations received in response to our request for warding proposals.

Our draft recommendations propose that Tewkesbury's 38 councillors should represent three three-councillor wards, twelve two-councillor wards and five one-councillor wards across the borough.

An outline of the proposals is shown in the map to the right of this box. A detailed report on the recommendations and interactive mapping is available on our website at: www.lgbce.org.uk.

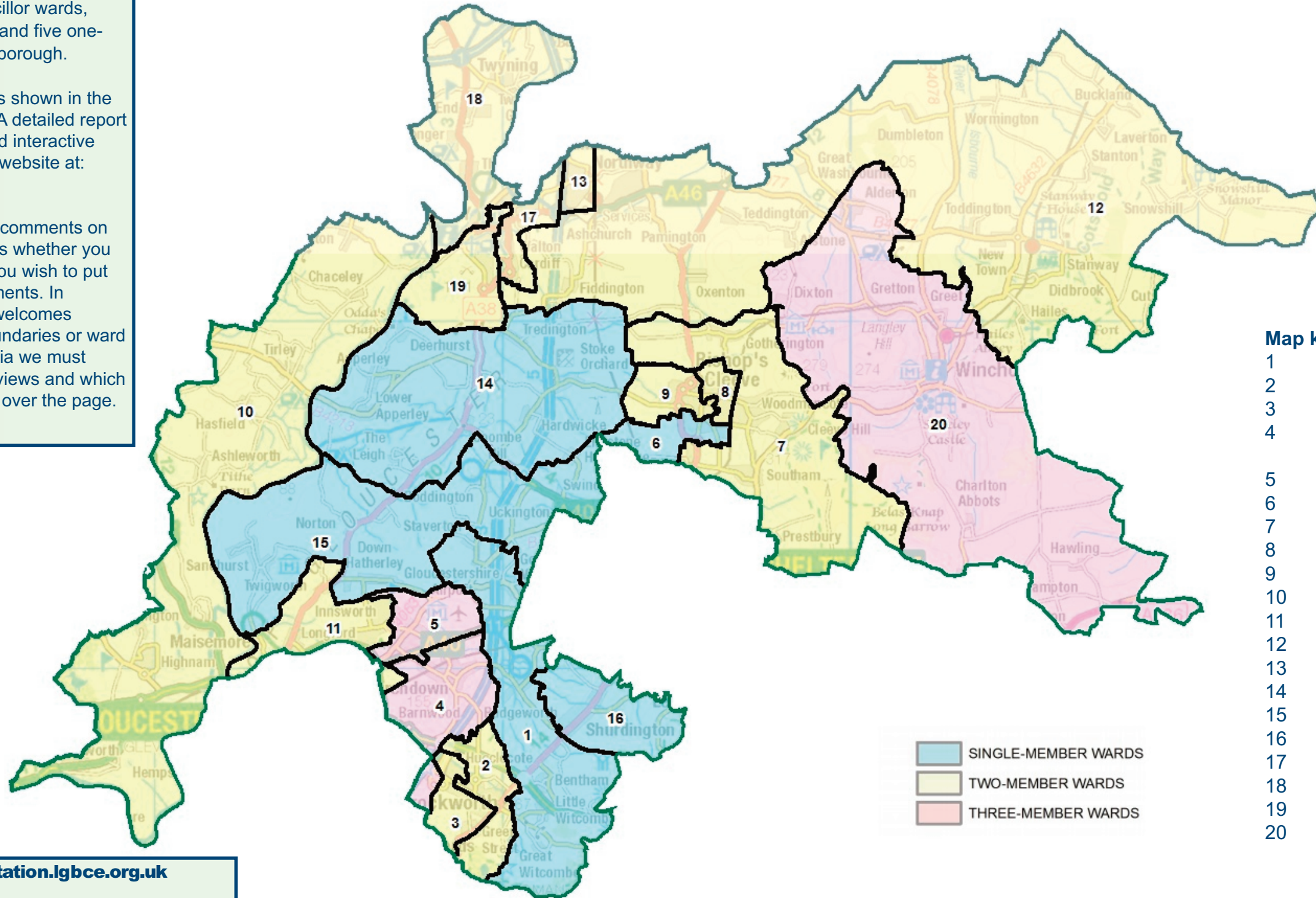
The Commission welcomes comments on these draft recommendations whether you support the proposals or if you wish to put forward alternative arrangements. In particular, the Commission welcomes proposals for alternative boundaries or ward names which meet the criteria we must follow as part of electoral reviews and which are described in more detail over the page.

Overview of draft recommendations for Tewkesbury Borough Council

View this map online and draw your own boundaries: consultation.lgbce.org.uk

Follow the review on Twitter: [@LGBCE](https://twitter.com/LGBCE)

If you are viewing this page online, click on the map to go straight to our interactive consultation area



Map key:

- 1 Badgeworth
- 2 Brockworth East
- 3 Brockworth West
- 4 Churchdown Brookfield with Hucclecote
- 5 Churchdown St John's
- 6 Cleeve Grange
- 7 Cleeve Hill
- 8 Cleeve St Michael's
- 9 Cleeve West
- 10 Highnam with Haw Bridge
- 11 Innsworth
- 12 Isbourne
- 13 Northway
- 14 Severn Vale North
- 15 Severn Vale South
- 16 Shurdington
- 17 Tewkesbury East
- 18 Tewkesbury North & Twyning
- 19 Tewkesbury South
- 20 Winchcombe

contains Ordnance Survey data (c) Crown copyright and database rights 2017

Have your say at consultation.lgbce.org.uk

- view the map of our recommendations down to street level.
- draw your own boundaries online.
- zoom into the areas that interest you most.
- find more guidance on how to have your say.
- read the full report of our recommendations.
- send us your views directly.